

## Therapeutic Use Exemption (TUE) Procedure

Procedure for players who need to take  
a prohibited substance for medical reasons.

January 2009 version

### Please note :

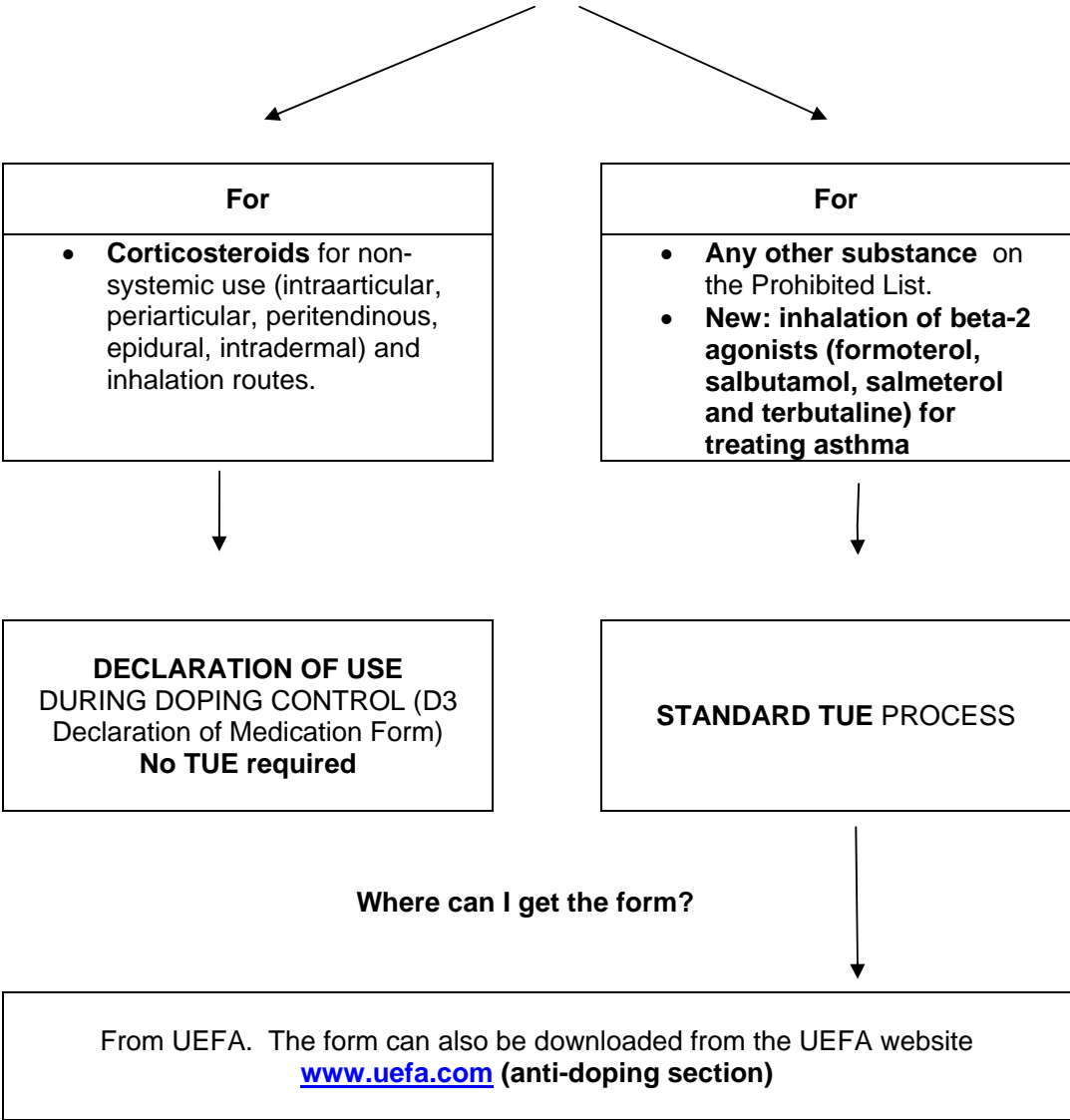
- The TUE request forms must be filled in **typed**, if possible, or written in **BLOCK CAPITALS**.
- The TUE must be completed in English, French or German. If the medical information attached is in another language, please enclose a summary in English, French or German.
- Any TUE request that is **incomplete or illegible** will not be dealt with and will be returned to the player, who will need to submit it again. This will, of course, delay the granting of the TUE and, therefore, the start of treatment.
- In accordance with WADA International Standard for TUE, the UEFA TUE Committee's decision should be completed within 30 days of receipt of all relevant documentation.
- The player can only submit one TUE request to one authorising body at a time. He/she is not allowed to submit the same TUE request to several authorising bodies.
- If the national anti-doping organisation has already granted the player a TUE, he/she must send UEFA the certificate, a copy of the original application form and the complete medical file in order for the UEFA TUE Committee to check that it fulfils the UEFA requirements. If this is the case, UEFA will recognise the TUE. UEFA may ask for further documentation.
- Always keep a copy of the certificate (TUE) from UEFA. It is not mandatory to do so, but it is advisable to present it and/or declare the TUE and prohibited substance(s) concerned at doping controls.
- This procedure should not in any case hinder or delay implementation of necessary or urgent medical treatment.
- Applications for a TUE for the use of **beta-2 agonists** must be accompanied by a full medical file, as stipulated in **UEFA's asthma minimum requirements** (anti-doping section on [www.uefa.com](http://www.uefa.com))
- The non-systemic use and inhalation of glucocorticosteroids no longer requires a TUE. However, their use must be declared on the D3 Declaration of Medication form during a doping control.

**Compliance with sports rules**

If I need to take a medicine that is listed on the Prohibited List, I must follow the procedure explained below as soon as possible:

**NB: For topical use of GCS (auricular, buccal, dermatological (including iontophoresis/phonophoresis), gingival, nasal, ophthalmic and perianal disorders), neither a TUE nor a declaration of use is requested.**

**Depending on the medicine involved**




**How do I fill in the form?**



Duly complete the form in **BLOCK CAPITALS** correctly and legibly with your doctor, who should fill in the appropriate boxes. Submit ALL required information/documents as listed on page 4 of the form (see Note 1. Diagnosis)

**Where do I have to submit the form?**



Fax the duly completed form to the UEFA  
confidential fax number **+41 22 990 31 31**.

Keep a copy of the TUE form and the fax confirmation sheet.

**When am I allowed to take the prohibited substance?**



Upon receipt of authorisation from UEFA. You can then use the substance in question during sport. This authorisation notice will specify the details of medical use, which will have to be duly respected.