

Tactical lineups: Full time

Matchday 4 - Wednesday 3 November 2010

Group G - Stadio Giuseppe Meazza - Milan

AC Milan

2 - 2

Real Madrid CF

60' (In) 9 Inzaghi / (Out) 80 Ronaldinho
 72' (In) 23 Ambrosini / (Out) 7 Pato
 84' (In) 10 Seedorf / (Out) 8 Gattuso

74' (In) 9 Benzema / (Out) 20 Higuain
 80' (In) 21 Pedro León / (Out) 3 Pepe
 90'+5 (In) 18 Albiol / (Out) 23 Özil

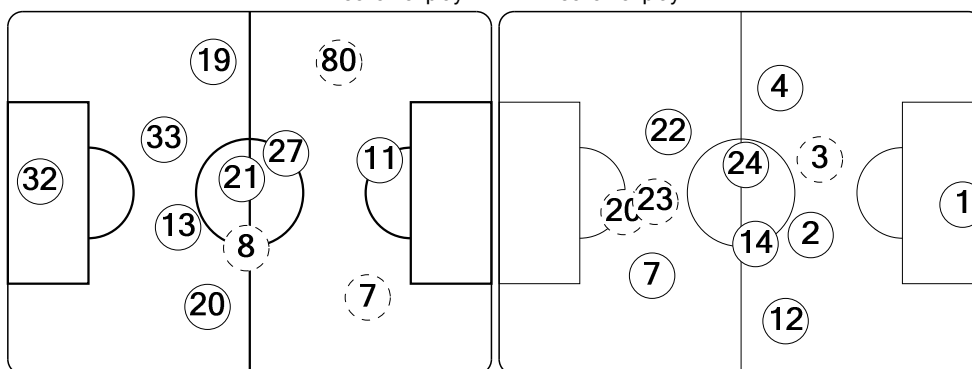
Total time played: 97'40"
 47% - 27'49" Ball possession 53% - 30'31"

Actual formation

Direction of play --> <-- Direction of play

Abbiati 32
 Pato 7
 Gattuso 8
 Ibrahimović 11
 Nesta 13
 Zambrotta 19
 Abate 20
 Pirlo 21
 Boateng 27
 Thiago Silva 33
 Ronaldinho 80

 Inzaghi 9
 Seedorf 10
 Ambrosini 23

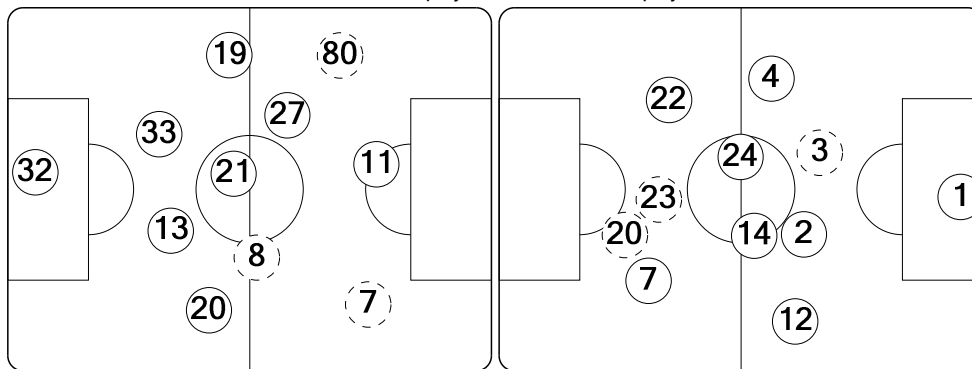


1 Casillas
 2 Carvalho
 3 Pepe
 4 Sergio Ramos
 7 Cristiano Ronaldo
 12 Marcelo
 14 Xabi Alonso
 20 Higuain
 22 Di María
 23 Özil
 24 Khedira

 9 Benzema
 18 Albiol
 21 Pedro León

Direction of play --> <-- Direction of play

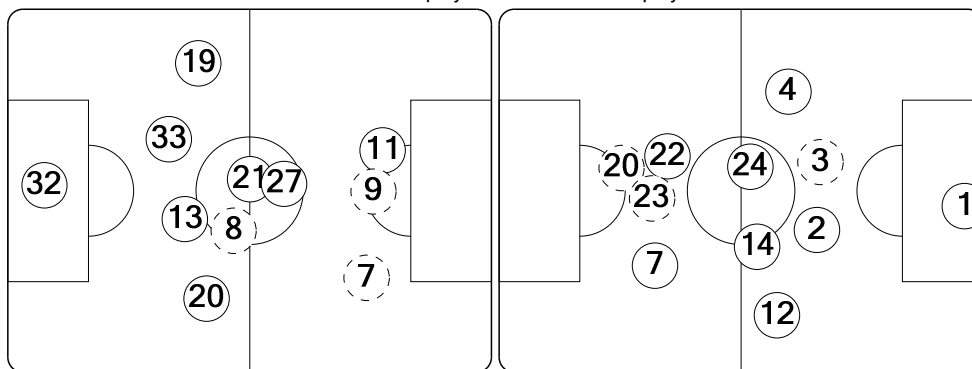
First half formation



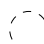
First half formation

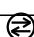
Direction of play --> <-- Direction of play

Second half formation



Second half formation

 did not play the entire match

 substitution

0:29:15 CET
 4 Nov 2010