



UEFA CHAMPIONS LEAGUE

Tactical Line-ups: full time

Round of 16 1st leg - Tuesday 16 February 2016

Parc des Princes - Paris

Paris Saint-Germain

2 - 1

Chelsea FC

74' (in) 9 Cavani / (out) 7 Lucas
81' (in) 25 Rabiot / (out) 6 Verratti
81' (in) 27 Pastore / (out) 14 Matuidi

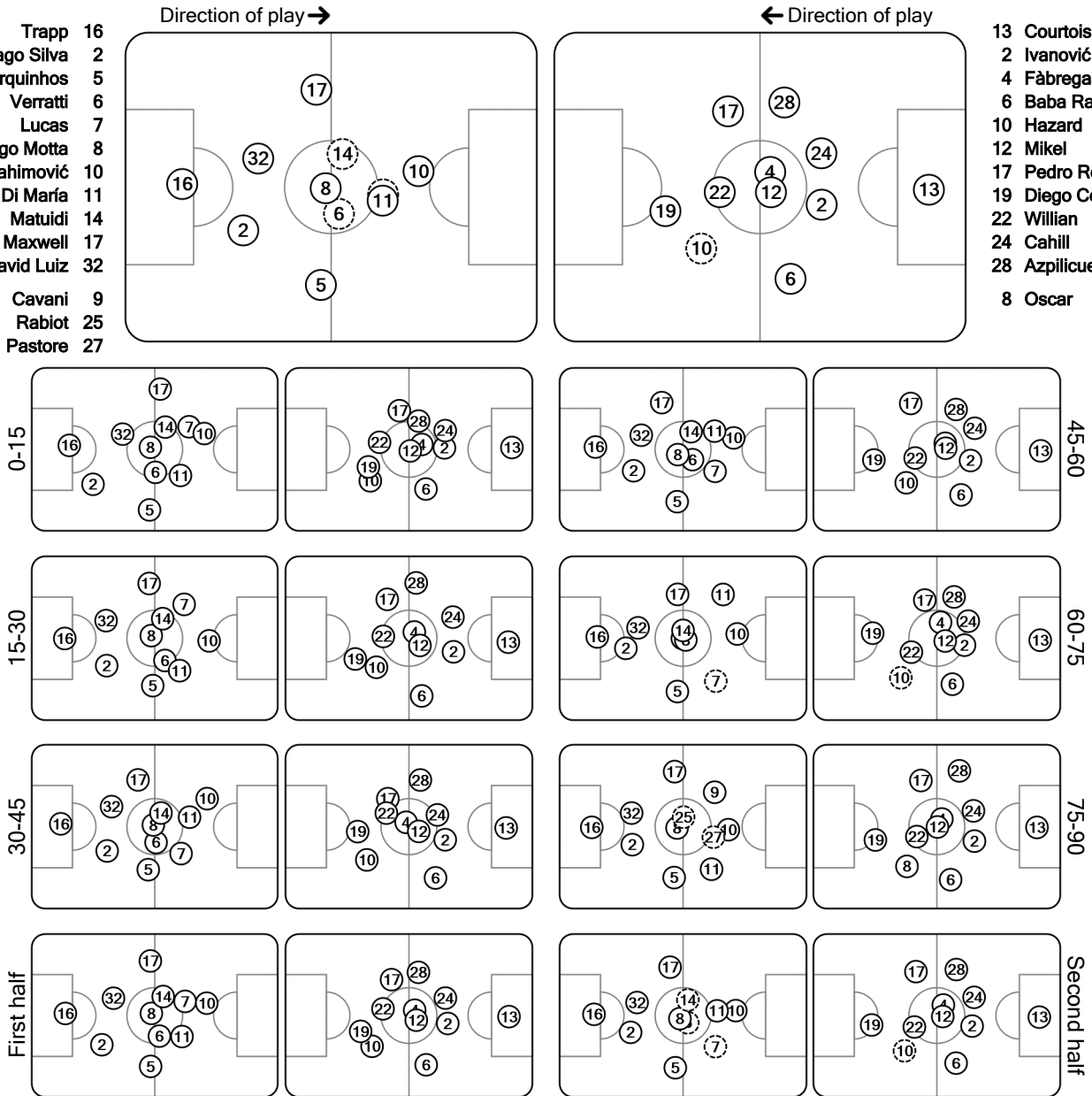
71' (in) 8 Oscar / (out) 10 Hazard

Total time played: 92'41"
61% - 37'24" Ball possession 39% - 23'42"

Actual formation

- Trapp 16
- Thiago Silva 2
- Marquinhos 5
- Verratti 6
- Lucas 7
- Thiago Motta 8
- Ibrahimović 10
- Di María 11
- Matuidi 14
- Maxwell 17
- David Luiz 32
- Cavani 9
- Rabiot 25
- Pastore 27

- 13 Courtois
- 2 Ivanović
- 4 Fàbregas
- 6 Baba Rahman
- 10 Hazard
- 12 Mikel
- 17 Pedro Rodríguez
- 19 Diego Costa
- 22 Willian
- 24 Cahill
- 28 Azpilicueta
- 8 Oscar



Did not play the entire match Substitution Sent off

00:03:44CET
17 Feb 2016